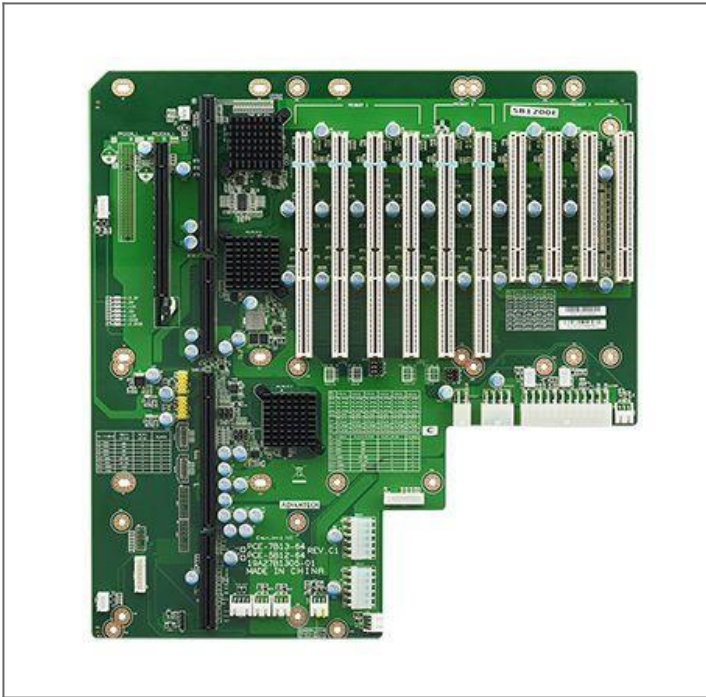




## PCE-5B12-64C1E

### PCE-5B12-64C1E PICMG 1.3 12-Slot Backplane



#### Features - PCE-5B12-64C1E PICMG 1.3 Backplane

Note: This backplane is intended for a 14-slot chassis.

- PICMG 1.3 connector
- 1x PCIe x16
- 2x PCI-X 64/100
- 4x PCI-X 64/66
- 4x PCI